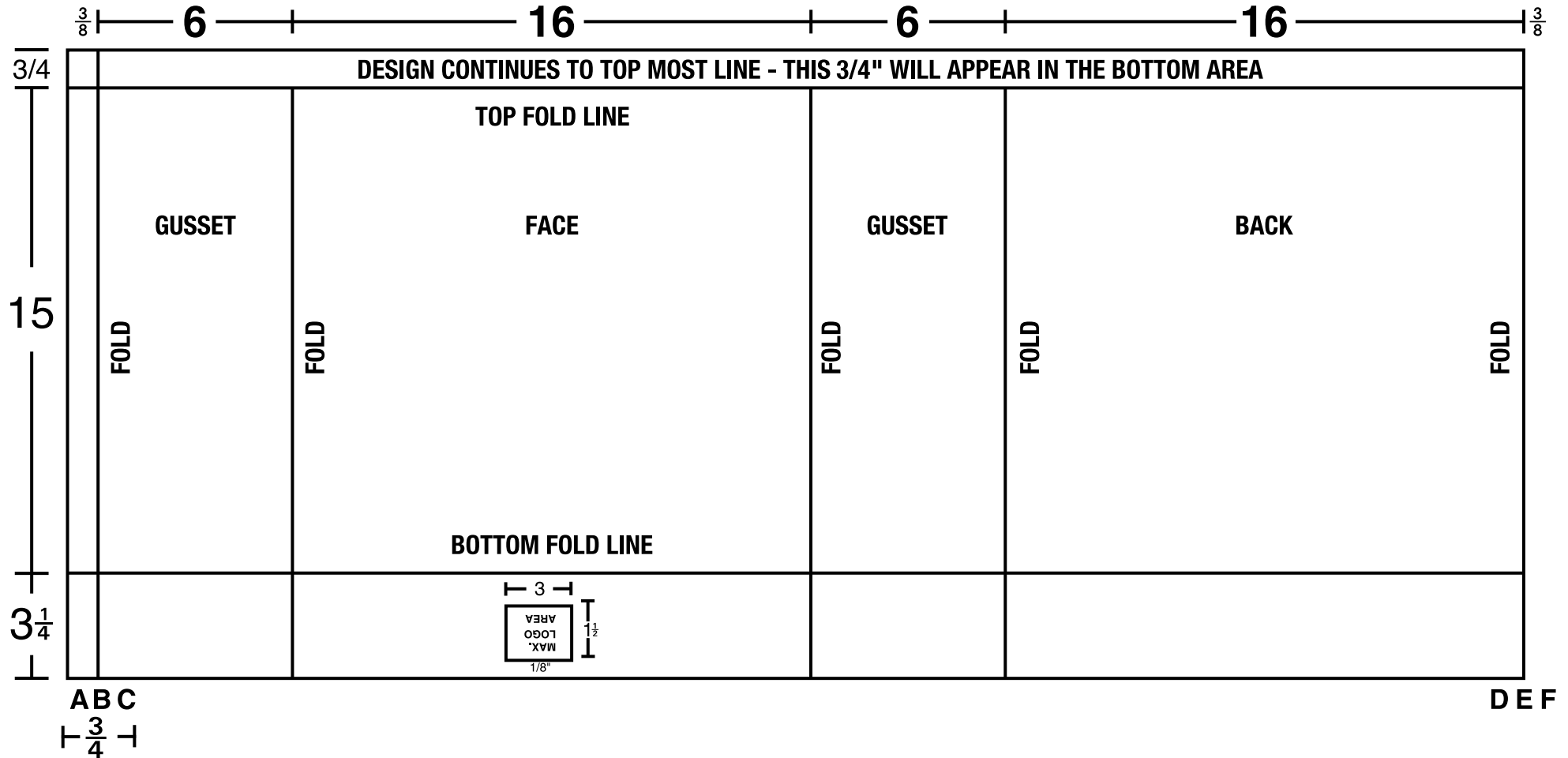


POLYMER BAG SPECS  
Distorted



Due to machine movement in bag conversion. Suggest copy be 1/4" bleed left & right & 1/2" bleed top and bottom or continue all over.

If a border design. Suggest copy be kept 1/4" in from all edges.

As a general rule a continuous design must begin and end at the same horizontal point.

A continuous design is one that aligns at the back 'E' line and the gusset 'B' line.

**FOR CONTINUOUS DESIGNS:**

The copy that falls between lines 'D' & 'E' must be duplicated and also placed between the 'A' & 'B' lines.

The copy that falls between lines 'E' & 'F' must be duplicated between the 'B' & 'C' lines

To compensate for press cylinder gain, the height of this template has been distorted by 3.5%. The actual finished bag height will be 15 1/2".